



### ***Elementary Addition***

**Completed for the week ending May 1<sup>st</sup> :**

- Completed interior framing
- Completed interior masonry walls
- Completed exterior spray applied air barrier
- Continued electrical/mechanical rough ins
- Continued exterior brick

**Planned for the week ending May 8<sup>th</sup> :**

- Continue mechanical/electrical rough ins
- Begin sheetrocking walls
- Complete exterior brick
- Begin demo of existing windows and doors and infill
- Submittal process ongoing

### ***High School/Middle School Renovations and Additions***

**Completed for the week ending May 1<sup>st</sup> :**

- Completed concrete slab in addition and existing floor where brick was demoed
- Completed exterior spray applied air barrier
- Completed all roofing
- Continued mechanical and electrical rough ins
- Started curtain wall framing
- Started interior wall framing

**Planned for the week ending May 8<sup>th</sup> :**

- Continue curtain wall framing
- Continue mechanical and electrical rough-ins
- Glazing to follow curtain wall framing
- Begin exterior brick
- Submittal process ongoing



Holdingsford Public Schools – ISD # 738

**ICS**  
Weekly Update

May 1, 2020



High School/Middle School Commons Addition:  
Framing for office walls beginning



**Holdingford Public Schools – ISD # 738**

**ICS**  
*Weekly Update*

**May 1, 2020**



High School/Middle School Commons Addition:  
Exterior air barrier applied. Brick and parapet flashing to follow.



**Holdingford Public Schools – ISD # 738**

**ICS**  
*Weekly Update*

**May 1, 2020**



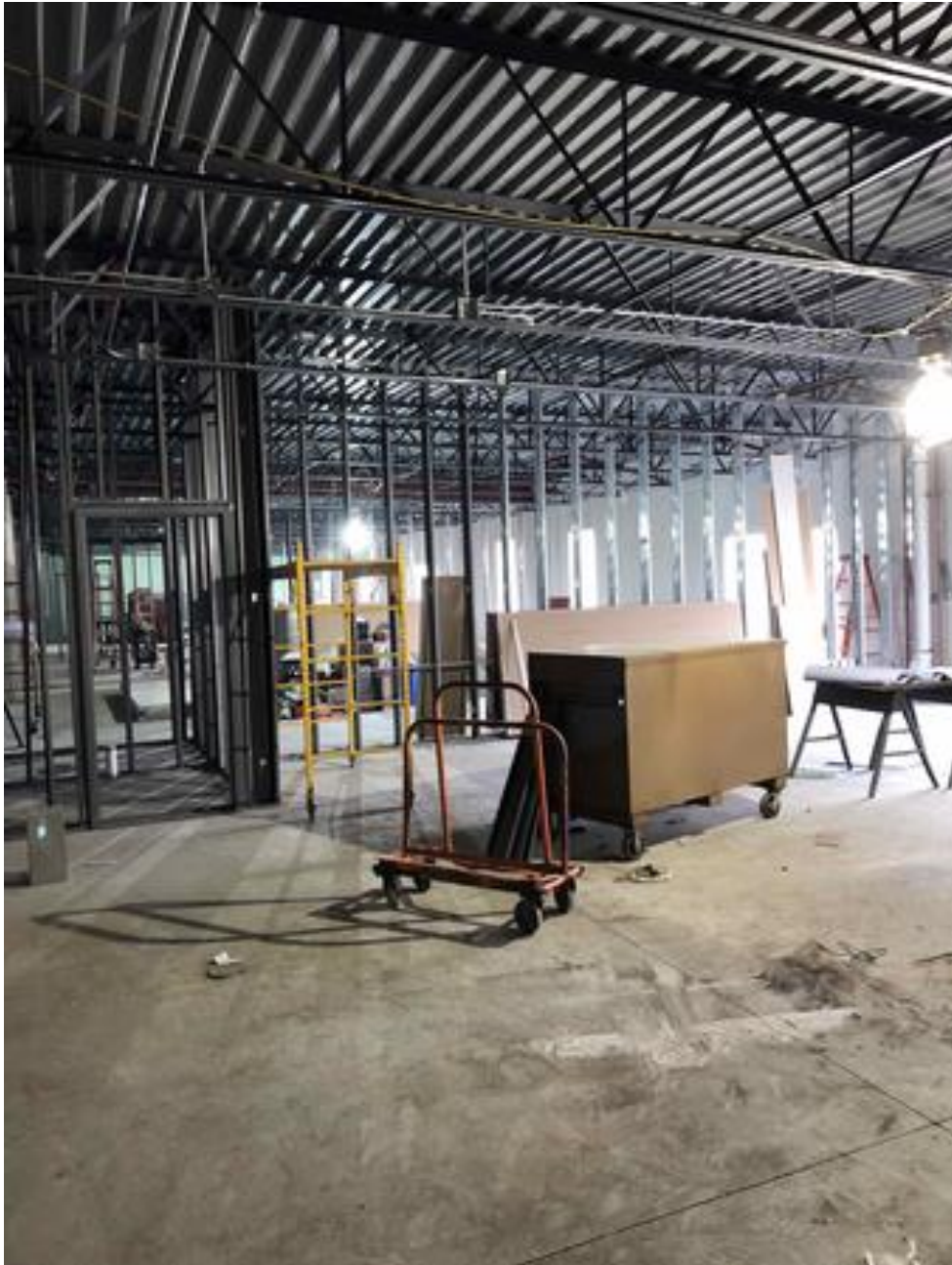
Elementary Classroom Addition  
Completed masonry walls down corridor



**Holdingford Public Schools – ISD # 738**

**ICS**  
*Weekly Update*

**May 1, 2020**



Elementary Classroom Addition:  
Classroom walls framed, ready for sheetrock following mechanical and electrical rough-ins