



Elementary Addition

Completed for the week ending May 29th :

- Completed mechanical and electrical rough ins
- Completed window install
- Began pouring stoops for exterior doors
- Continued demo of existing openins and infill
- Started painting
- Staring accousting ceilings

Planned for the week ending June 5th:

- Continue acoustical ceilings
- Continue paiting
- Complete parapet wall flashing
- Continue demo and infill of existing openings
- Begin casework installation
- Submittal process ongoing

High School/Middle School Renovations and Additions

Completed for the week ending May 29th :

- Continued interior framing
- Continued mechanical and electrical rough ins
- Completed interior demo of existing ceiling and walls
- Completed exterior brick
- Continued sheetrocking

Planned for the week ending June 5th :

- Continue exterior metal wall panels
- Continue mechanical and electrical rough-ins
- Continue sheet rocking
- Complete interior framing
- Begin taping following sheetrock
- Submittal process ongoing



Holdingford Public Schools – ISD # 738

ICS
Weekly Update

May 29, 2020



High School/Middle School Commons Addition:
Glazing installed, brick complete, metal panels to follow



Holdingford Public Schools – ISD # 738

ICS
Weekly Update

May 29, 2020



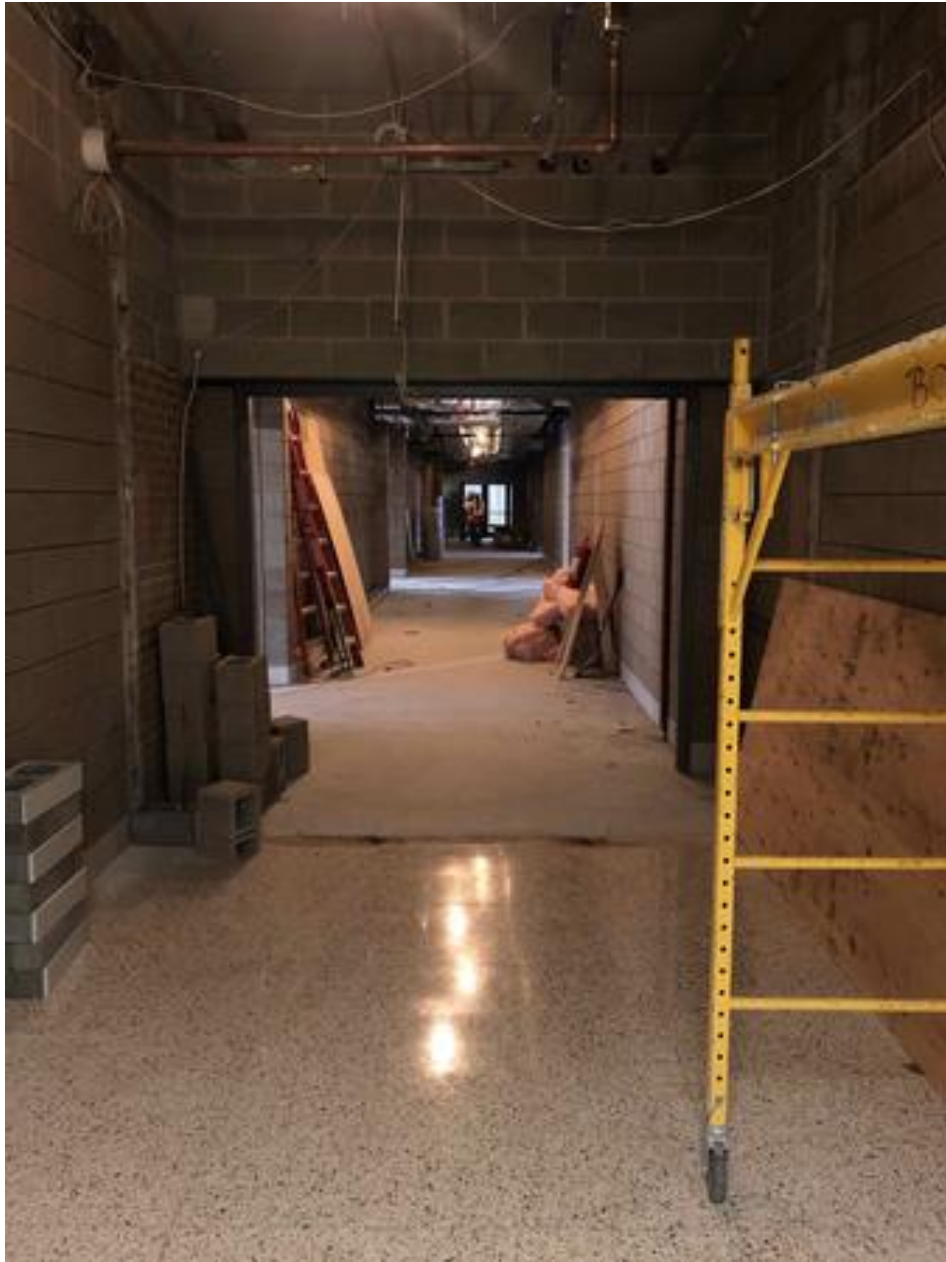
Team Room/Offices:
Framing, sheetrock and taping complete, painting to follow



Holdingsford Public Schools – ISD # 738

ICS
Weekly Update

May 29, 2020



Elementary Classroom Addition:
Mechanical and electrical rough-ins complete, painting and ceilings to follow